

# NO TRUST IS AN ISLAND

## a briefing for governors on working collaboratively in health and care systems

### Introduction

It is now widely accepted that trusts need to work collaboratively within health and care systems to make best use of collective resources and improve services for patients. No trust is an island capable of meeting the health and care needs of the population it serves on its own. This means focusing on the needs of a local population and overcoming barriers between hospitals, mental and physical health services, local authorities, primary care and the wider public health system, including schools and housing.

### What is a sustainability and transformation partnership (STP)?

An STP enables NHS organisations, local authorities and clinical commissioning groups to work together to improve the health and wellbeing of a population in a particular area.

Originally described as sustainability and transformation plans, STPs were developed in 44 areas (also known as 'footprints') in 2016. Although joint working in STPs is voluntary, every footprint was required to produce an STP plan. STPs were renamed sustainability and transformation *partnerships* in March 2017 – a longer term vehicle to improve quality of care, tackle health inequalities and reduce the financial deficit.

On the ground, STPs are being used as a catalyst to plan and support discussions about operational collaboration, to help reconfigure services, share workforce and as a means of driving new models of delivering patient care. However, the pace of change varies considerably across the country depending on the quality and history of local relationships, as well as leadership capacity and the various geographical, financial and operational challenges facing the local area.

### What is an integrated care system (ICS)?

An ICS was formerly referred to as an accountable care system (ACS), until NHS England and NHS Improvement renamed them in the 2018/19 planning guidance.<sup>1</sup> An ICS is an advanced version of an STP. NHS England has announced the intention for all STPs to become ICSs, although they have not suggested a timeframe for this.

---

<sup>1</sup> NHS England and NHS Improvement, *Refreshing NHS plans for 2018/19*. (February 2018) [online] <https://www.england.nhs.uk/publication/refreshing-nhs-plans-for-2018-19> [Accessed 13 April 2018]

In addition to working together more closely, organisations within an ICS (both commissioners and providers) also take collective responsibility, often in partnership with local authorities, for resources (funding, workforce, estates, technology, information) and population health, either on the STP footprint or, a smaller, sub-STP footprint.

At the time of writing (May 2018), 14 of the most advanced STPs are evolving into ICSs, including two devolved health and care systems:

- Frimley Health including Slough, Surrey Heath and Aldershot
- South Yorkshire and Bassetlaw, covering Barnsley, Bassetlow, Doncaster, Rotherham and Sheffield
- Nottinghamshire, with an early focus on Greater Nottingham and Rushcliffe
- Blackpool and Fylde Coast with the potential to spread to other parts of Lancashire and south Cumbria at a later stage
- Dorset
- Luton, with Milton Keynes and Bedfordshire
- Berkshire West, covering Reading, Newbury and Wokingham
- Buckinghamshire
- Greater Manchester (devolution area)
- Surrey Heartlands (devolution area)
- Gloucestershire
- Suffolk and North East Essex
- West, North and East Cumbria
- West Yorkshire and Harrogate.

The current direction of travel is for ICSs to submit a collective operational plan to NHS England and NHS Improvement (rather than separate organisational plans) and to deliver a shared financial target across organisations within an ICS (known as a 'system control total'). ICSs are also exploring taking more responsibility for managing collective performance across a system in return for new freedoms and flexibilities in relation to operational performance, some transformation funding, and support from national bodies to develop new ways of working.

## What about accountable care organisations (ACOs)?

Considerable media attention has focused on the proposed introduction of ACOs. An ACO within England would occur 'where the commissioners in that area have a contract with a single organisation for the great majority of health and care services and for population health in the area.'<sup>2</sup> In practice only two local areas are exploring possible use of this new approach to contracting and delivering services.<sup>3</sup> This briefing therefore focuses on the development of collaborative working in health and care systems through STPs and ICSs as that is relevant across the country.

2 NHS England, *Next steps on the five year forward view*, March 2017. [online] [Accessed 13 April 2018] <https://www.england.nhs.uk/wp-content/uploads/2017/03/NEXT-STEPS-ON-THE-NHS-FIVE-YEAR-FORWARD-VIEW.pdf>

3 The two areas exploring the possible use of ACOs are Manchester and Dudley

# THE NHS LANDSCAPE

## STPs AND ICSSs: TRANSFORMING THE NHS IN ENGLAND

**2014** NHS  
Five year forward view  
published

**2015** 50 vanguards  
tested new models of care

**2016** Sustainability and  
transformation plans  
developed

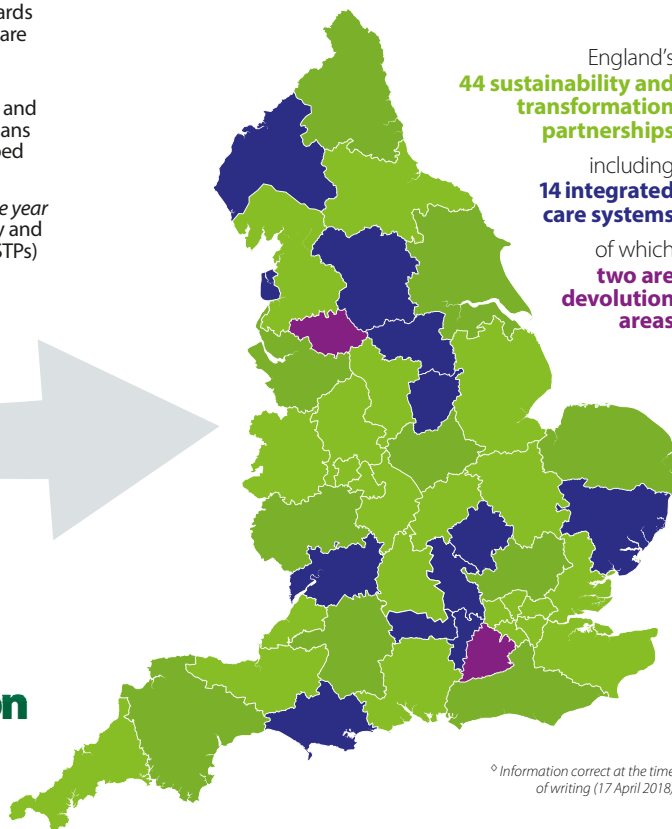
**2017** Next steps on the five year  
forward view announced sustainability and  
transformation partnerships (STPs)

**2018** Integrated care  
systems (ICSSs) established

England's  
**44 sustainability and  
transformation  
partnerships**

including  
**14 integrated  
care systems**

of which  
**two are  
devolution  
areas**



Information correct at the time  
of writing (17 April 2018)

### KEY FACTS

**19** NHS trust chief  
executives are also  
leading STPs/ICSSs<sup>o</sup>

Each STP covers a  
unique geographic  
area, with population  
sizes ranging from...

**327,000  
to 2.8million**

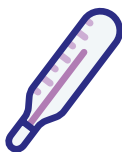
### KEY PARTNERS INCLUDE...



Acute  
trusts



Mental health  
trusts



Community  
trusts



Ambulance  
trusts



Specialist  
trusts



Local  
authorities



Clinical  
commissioning  
groups



Independent  
and third sector  
organisations

### PUBLIC ENGAGEMENT

- Genuine engagement of patients, communities and NHS staff is crucial to the success of STPs.
- Plans need to be clinically led and follow established requirements for public consultation.
- While there are some examples of great community and staff engagement, this remains a challenge and a source of media and political attention locally and nationally.



### GOVERNANCE

- The role, responsibilities and statutory accountabilities of NHS foundation trust boards and governors are unchanged by the development of STPs and ICSSs.
- However, governors will need to continue to support and challenge foundation trusts as they work in partnership with others.



## Governance and engagement

Governors may wish to support their trust to work collaboratively in their local health and care system to improve services for patients. STPs and ICSs have no legal status and derive their decision-making powers from the statutory bodies which comprise them, so an NHS foundation trust board still holds responsibility for decisions in support of the STP. Where significant changes for foundation trusts are proposed, governors will need to be consulted as they are now, especially if this falls within the trust's definition of a significant transaction.

STPs and ICSs bring together various organisations with different statutory requirements and processes for engaging the public. However plans for change need to follow established public consultation processes, especially as some areas are being asked to consider difficult choices about where best to put resources. The genuine engagement of patients, communities and NHS staff is crucial to the success of STPs and ICSs, as is clinical leadership.

Foundation trust governors are well placed to support trusts' engagement with the public around STPs and ICSs. Not only do they act on behalf of the interests of the trust's members and the public, they also have experience in engaging with communities that are traditionally hard to reach, or groups with certain protected characteristics.

## Eight helpful questions for governors to ask

Governors will be interested in how their NHS foundation trust is contributing to the STP(s)/ICS, and may wish to consider the following questions:

- 1 What is my trust's STP/ICS footprint, and who are the key partners in its delivery?
- 2 How is my trust contributing to the STP/ICS, and what is the impact on existing plans?
- 3 How can the council of governors best receive information on progress in delivering the STP/ICS which is relevant to the trust and its patients?
- 4 How will the STP/ICS improve health and care for the local population?
- 5 How can the council of governors best support the trust in leading or contributing to its STP/ICS?
- 6 How is my trust's STP/ICS getting greater value – better health and care for the population – from the public funds collectively entrusted to providers and commissioners in the footprint?
- 7 What assumptions have been made that underpin the board's strategy? Has the board actively engaged staff and the public on its plans?
- 8 How can governors support the board to engage with patients and the community around the STP/ICS and any proposed plans for change?

For more information:

[www.nhsproviders.org/stps-and-accountable-care](http://www.nhsproviders.org/stps-and-accountable-care)

NHS Providers (May 2018)

*No trust is an island - a briefing for governors on working collaboratively in health and care systems*